



All prices MSRP list. Call for discounts.

# LIGHT TOWER PRICING GUIDE

Management • Critical Power Systems • Generator Procurement • Facility Management • Emergency  
 Contracts • Forward Deployment • Infrastructure Planning • Leasing Facilities • Engineering  
 Project Consultation • Advanced Site Preparation • Full Service Integration • Management System  
 Response • Maintenance Contracts • Equipment Management • Engineering Services • Financial

Power to the worldwide marketplace...



**AL4000**

**Light Tower**

LIGHT TOWER  
**AL4000**



# Light Tower AL4000

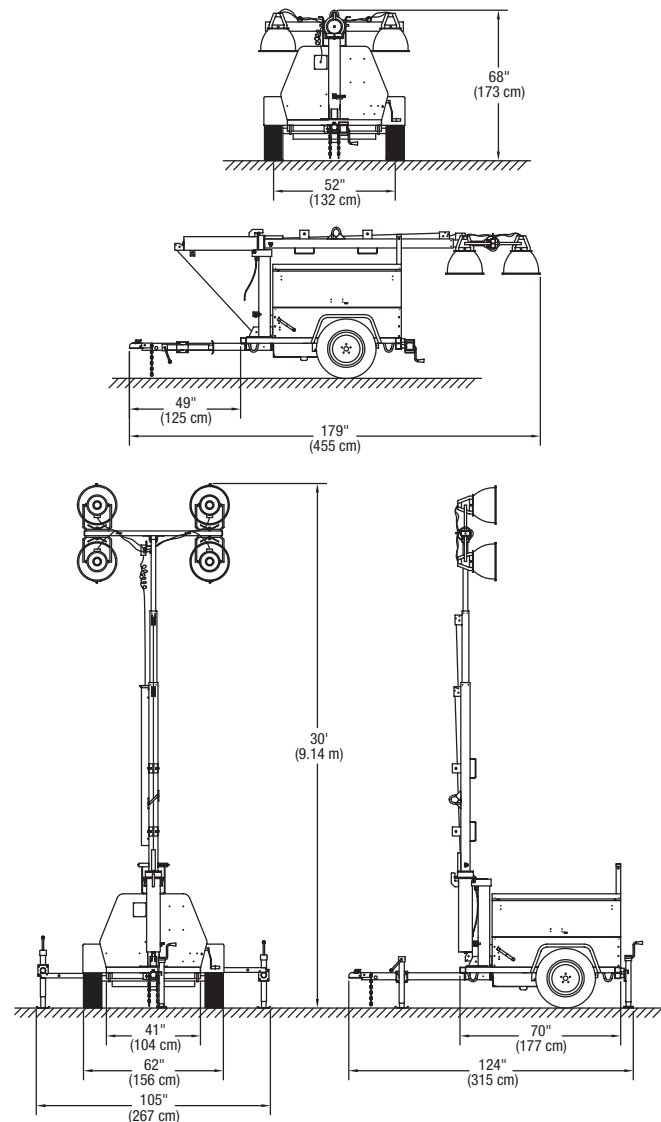
## Features

- Full sized, 30 ft (9.1 m) extended height floodlight tower illuminates 7-1/2 acres.
- Galvanized tower is 360° rotatable for easy aiming from the ground.
- Winch handle ergonomically positioned for easy raising and lowering. Winch drum is inside cabinet. Electric winch available.
- Light fixtures mount securely on mast for travel or can be left on crossarm.
- Pallet pockets and lifting eye make unit easier to load and unload.
- Plug-in ballasts are installed in galvanized steel boxes.
- Light fixtures plug into weatherproof receptacle box with UL and CSA approved connectors.
- Retractable power cord automatically recoils into protective sleeve to prevent damage when raising, lowering and moving tower.
- Control panel located inside cabinet, protected from the elements.

## Specifications

Lamps	Metal halide 4 x 1,000 W
Generator	Brushless 60 Hz, 6.0 kW
Engine	Kubota diesel 13.6 hp
Fuel capacity	30 gal (114 L)
Wheel size	15 in (38 cm)
Axle rating	3,500 lbs (1,588 kg)
Tongue weight travel position	100 lbs (45 kg)
Total weight no fuel	2,050 lbs (930 kg)

## Dimensions



### Genie Industries, Inc.

A Terex company

18340 NE 76th Street  
PO Box 97030  
Redmond, WA 98073-9730

For more information, product demonstration, or details on purchase, lease and rental plans, please contact your local Genie Distributor.



# TEREX®

## 2008 Price List Light Towers AL4000

<u>Standard Features</u>	<u>Model</u>	<u>List Price</u>
<b>Chassis</b>	<b>AL4000 Heavy-duty</b>	<b>\$10,615</b>
60 Hz, 6 kW generator	<b>AL4000 automatic model - timer or photocell stop/start</b>	<b>\$11,705</b>
13.6 hp, Kubota diesel engine, D1105 water-cooled		
Hand winch operated 30 ft. telescoping galvanized tower	<b>Options (add to model base price)</b>	
6 kW Leroy Somer generator set	Kubota diesel water-cooled, 13.6 hp/8.0 kW LS generator set	\$1,130
Low oil pressure and high temperature engine safety shut down	Perkins / CAT diesel water-cooled, 14.3 hp/6.0 kW LS generator set	\$1,560
One 30A/240V T/L receptacle	Combination ring and ball hitch	\$145
One GFI protected 20A/120V duplex receptacle	Ring hitch, 2.5 in.	\$60
30 gal fuel tank	DOT approved run, stop turn lights, 4 pole plug	\$130
Pneumatic gas lift springs on doors	12V dome light with switch	\$60
P205/75B15 tires	7 pole connector for light package	\$30
Three 3,000 lbs plated screw jacks	50 gal fuel capacity - code number varies by generator set spec	\$510
3,500 lbs Heavy-duty axle	Extra GFI duplex receptacle with breaker	\$80
Plug-in ballasts	Electric trailer brakes	\$465
	Hydraulic surge brakes/ring hitch	\$960
	Hydraulic surge brakes/ball hitch	\$925
	Electric 12V winch in lieu of manual	\$820
	Export racking/preparation	\$480
	Export crating/preparation	\$685
<b>Tower</b>	700 CCA battery	\$85
Four 1000W metal halide lights	Fuel/water separator-filter	\$155
Retractable coiled power cord	Low temperature coolant mixture (-40° F)	\$30
Quick disconnect fixtures	Engine block heater for Kubota D905 and D1105	\$60

\*Special paint available

\*Other lighting types available

Effective Date: January 1, 2008. Product specifications and prices are subject to change without notice or obligation. All prices are in U.S. dollars F.O.B. Factory. Products and services listed may be trademarks, service marks or trade-names of Terex Corporation, Genie Industries, Inc. and/or their subsidiaries in the U.S.A. and many other countries. All rights are reserved. Terex® is a registered trademark of Terex Corporation in the U.S.A. and many other countries. Genie® is a registered trademark of Genie Industries, Inc in the U.S.A. and many other countries. Genie is a Terex Company. Copyright © 2007 Terex Corporation.

Updated - October 1, 2007